



1

---

---

---

---

---

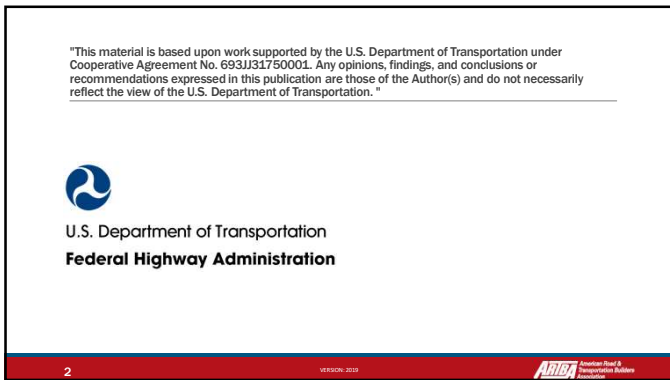
---

---

---

---

---



2

---

---

---

---

---

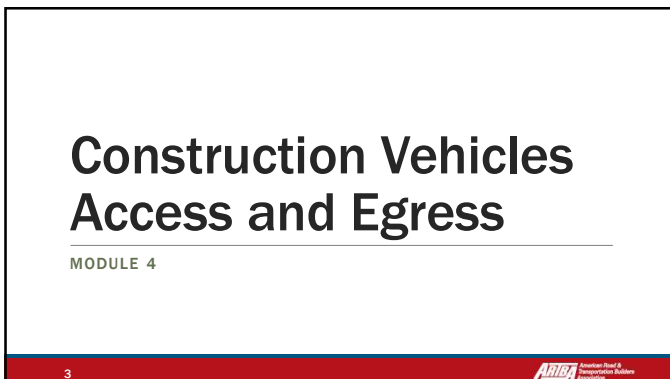
---

---

---

---

---



3

---

---

---

---

---

---

---


---

---

---

**Learning Objectives**

- Explain the main safety problems of access and egress areas in the work zone
- Provide solutions to the access and egress safety problems in the work zone



4

---

---

---

---

---

---

---


---

4

**Why is Access and Egress Control Important?**

Access to- and egress from work zones presents significant challenges. Hazards are compounded when the roadway carries high traffic volumes or operates at high traffic speeds. Safety challenges include:

- Motorists following construction vehicles into the workspace;
- Acceleration and deceleration of construction vehicles as they exit and enter open traffic lanes;
- Proximity of workers on foot to access and egress locations.



5

---

---

---

---

---

---



---

---

5

**Primary Challenge**

Getting materials and equipment into the work zone safely and efficiently.

6

---

---

---

---

---

---

---

---

6

### Access and Egress Challenges



7



7

---

---

---

---

---

---

---

---

### Access and Egress Challenges

Acceleration / Deceleration Lanes  
• Short or Non-existent

Signage Indicating Merge / Exit Points  
• Signs give vague information  
• Messages left up 24 / 7

Flagging Operations  
• Works best with low traffic and moderate trucks  
• Low trucks = intermittent flagging  
• Proper rules are forgotten

Night Work  
• Poor sight distance, impaired drivers, others?

8



8

---

---

---

---

---

---

---

---

### ITCPs Coordinate Tasks



9



9

---

---

---

---

---

---

---

---

### How does this apply to ITCPs?

Access and egress challenges can be addressed by an ITCP in the following ways:

- Isolating workers on foot from trucks and equipment;
- Limiting/controlling vehicle access points;
- Coordinating truck and equipment movements;
- Providing guidance to workers on foot, truck drivers, and equipment operators.
- Designating locations for parked vehicles and equipment
- Raising awareness about vehicle intrusions with workers and operators/drivers

10

---

---

---

---

---

---

---

---

---

---



### Challenge #1

Trucks entering the work zone put motorists and those on other side of wall at risk.

11

---

---

---

---

---

---

---

---

---

---

### ITCP Solution

Training truckers to pay attention to work space dynamics.

Instruct workers to stay clear of access and egress points.

Instruct employees on proper locations for parking and staging vehicles, away from entry and exit points.

12

---

---

---

---

---

---


---

---

---


---

**Challenge #2**  
Trucks queued inside the work zone create obstacles for workers and operators.



13

VERSION: NOVEMBER 2017



13

---

---

---

---

---

---


---

---

**ITCP Solution**

If queues threaten to block access and egress locations, queues should be redirected, or different access and egress spots should be opened and identified for drivers to use.

14



14

---

---

---

---

---

---

---

---



**Challenge #3**  
Trucks do not have sufficient space to slow down when entering, or match traffic speeds when exiting.

15



15

---

---

---

---

---

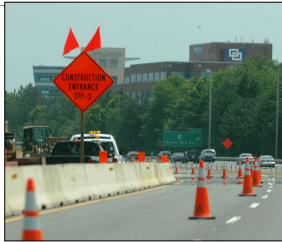
---

---

---

### ITCP Solution

Use shoulder areas or closed lanes to create ramps that will provide safe acceleration and deceleration zones.



16



16

---

---

---

---

---

---

---

---



### Challenge #4

Motorists may follow construction trucks into the work area.



VERSION: NOVEMBER 2017

17

17

---

---

---

---

---

---

---

---

### ITCP Solutions

#### Traditional Warnings:

- Slow Speed Advisory
- Dynamic Late Merge
- Travel Time / Delay
- Excessive Speed Warning
- Traffic Surveillance
- Stopped Traffic Warning
- Trucks Entering / Exiting
- Maintain TTCDs in Good Condition



18



18

---

---

---

---

---

---

---

---

### ITCP Solutions

Vehicle activated warning signs:

- Replace signs on vehicles
- Real-time information

19

---

---

---

---

---

---

---

---

### Challenge #5

Crew, operators, subcontractors and others may not be up-to-date on access/egress locations as work progresses.

20

---

---

---

---

---

---

---

---

### ITCP Solution

Hold pre-shift meeting with all involved

Everyone must be informed on daily activities and changes.

21

---

---

---


---

---

---

---

---



**Challenge #6**

Motorists may breach barriers and strike workers near access and egress points.

**ARIBA** American Road & Transportation Builders Association  
VERSION: NOVEMBER 2017

22

---

---

---

---

---


---

---

---

**ITCP Solution**

When openings are not in use they should be evaluated to see if it is necessary to close them. Watch for vehicles that do not belong in or near the work area.



- Check for problems such as blunt ends on barriers

**ARIBA** American Road & Transportation Builders Association  
VERSION: NOVEMBER 2017

23

---

---

---


---

---

---

---

---



**Challenge #7**

When incidents occur within the work zone, emergency responders need access.

**ARIBA** American Road & Transportation Builders Association  
VERSION: NOVEMBER 2017

24

---

---

---

---

---

---

---

---



### ITCP Solution

The Temporary Traffic Control Plan and the Internal Traffic Control plan should work in tandem to allow access for emergency responders.

Evaluate each job. When appropriate, local police should be kept up to date on activities that disrupt traffic and have the potential for workers to be harmed.



25



25

---

---

---

---

---

---

---

---

### ITCP Solution

Law enforcement and emergency responders need to know what is happening on your jobsite.



26



26

---

---

---

---

---

---

---

---

### Federal Regulations

Traffic Control Devices Rule - 23 CFR 630 (Subpart K); Effective December 04, 2008 Requires States to consider road user and worker safety by addressing:

- Use of positive protection devices to prevent intrusions;
- Exposure control measures;
- Other traffic control measures to minimize crashes;
- Safe entry/exit of work vehicles/equipment from the travel lanes

27



27

---

---

---

---

---

---

---

---

# Discussion and Questions

END MODULE FOUR

---

28



---

---

---

---

---

---

---

---