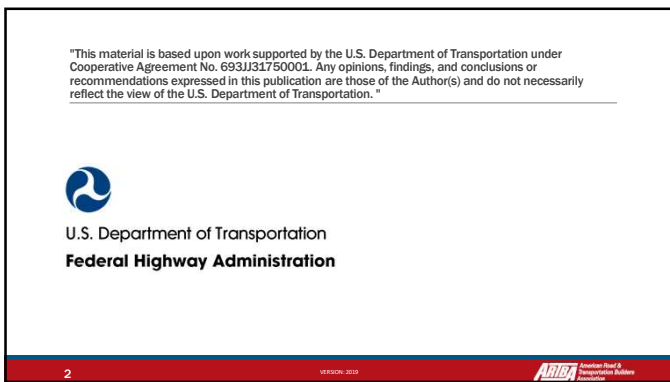
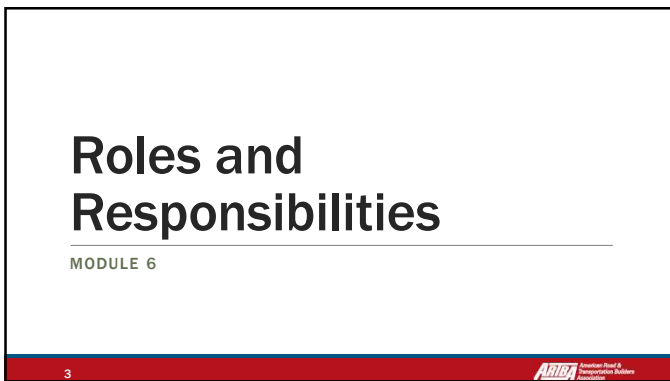




1




2



3

Learning Objectives

- Indicate the key people in and ITCP
- Explain the responsibilities of those involved in an ITCP
- What are your responsibilities in an ITCP




4

4

Who Is Responsible for ITCPs?

A GOOD ITCP PROGRAM MAY INVOLVE A NUMBER OF KEY PEOPLE:

- Safety Professional
- Inspectors/Quality Control
- Superintendent/ Project Manager
- Supervisor and Lead Person
- Workers on Foot
- Truck Drivers



5

5

Others Involved in ITCP

- Equipment Operators
- Spotters
- Site "visitors"
 - Surveyors
 - OSHA
 - Senior Management



6

6

Safety Professional

PRIMARY ROLE: **Training/Oversight**

- Ensure site-specific ITCP is created
- Train on-site personnel in ITCP concepts
- Ensure all construction supervisors are familiar with the plan



7



7

DOT – Quality Control & Inspector



PRIMARY ROLE: **LIAISON**

- Consider ITCP needs during the site operations phase
- Assist and advise in plan execution
- Communicate with the road owner the importance of ITCP implementation

8



8

Superintendent/ Project Manager

PRIMARY ROLE: **OVERSIGHT**

- Oversee ITCP Implementation
- Ensure Subcontractor Coordination and "Buy-in"
- Assign personnel to carry out the plan



9



9

Supervisor and Lead Person



PRIMARY ROLE:
IMPLEMENTATION

- Plan and implement the ITCP site
- Responsible for coordination among personnel and subcontractors at the construction site
- Ensure changes are made to ITCP as site conditions change

10



10

Workers on Foot

PRIMARY ROLE:
UNDERSTAND, COMPLY and CORRECT DEFICIENCIES

- Learn the elements of ITCPs and how to comply
- Understand the hazards of working around equipment
- Take responsibility for personal safety; apply safety training lessons



11



11

Truck Boss



PRIMARY ROLE:
COMMUNICATE WITH OTHER DRIVERS

- Share ITCP instruction on where drivers should operate
- Assist in communicating safe site procedures with all truck drivers

12



12

Truck Drivers



PRIMARY ROLE: KEEP A SAFE DISTANCE FROM WORKERS ON FOOT

- Receive ITCP instruction on where they should operate
- Receive navigation assistance (spotters) when appropriate
- Never operate into a blind area without checking for pedestrians

13



13

Equipment Operators

PRIMARY ROLE: KNOW THE LOCATION OF WORKERS ON FOOT

- Do not move until the blind area is checked or a spotter is designated.
- Know blind area for equipment you are operating.
- Stay out of areas designated for workers on foot.
- Do a 360° "walk-around" before moving equipment.



14



14

Spotters



PRIMARY ROLE: SAFE BACKING

- Ensure operator knows where you are and will be located; make eye contact
- Ensure workers know your responsibilities and wait for permission to enter area
- Receive training in safe spotting procedures and know the signals
- Stay in continuous communication with operator and remain visible at all times

15



15

Site Visitors




- **PRIMARY ROLE: GET INFORMED**
 - Check in with site supervisor when you arrive
 - Ascertain proper location to park your vehicle
 - Do not enter blind areas
 - Stay in areas designated for workers on foot

16 

16

Class Activity

WHAT ARE YOUR DUTIES

17 

17

Discussion and Questions

END MODULE SIX

18 

18
