


West Virginia LTAP Winter Maintenance Snow and Ice Control Workshop

STORMWATER AND MELTWATER CONSIDERATIONS



PRESENTED BY:
DELAWARE T²/LTAP CENTER

1

Stormwater and Meltwater

- Clogged/blocked stormwater facilities can frustrate your snow and ice control
- Some storms have active runoff during the event
 - Think of freezing rain, particularly at the end or the beginning as temperatures are on the rise or declining
- Some snowstorms follow or are followed by rain
- Some storms are followed by surprisingly high temperatures
 - Only has to get into the high 30s to start stuff flowing

Winter Maintenance Training – Delaware T² Center

2

Drainage Systems

3

- **Closed drainage systems**
 - Inspect drain inlets and clear them of debris and silt
 - Inspect drainage pipes and clear them
 - Remove sources of new blockages (leaf piles, trash)
- **Open drainage systems**
 - Inspect ditches, re-point as necessary
 - Dress shoulders to ensure positive drainage into ditches
- **Cross culverts**
 - Inspect for upstream debris that may dislodge and block
- **Anticipate snow melt**

AASHTO Guide for Snow and Ice

Winter Maintenance Training – Delaware T² Center

3

Post-Storm

4

- **Push back shoulders**



AASHTO Guide for Snow and Ice

Winter Maintenance Training – Delaware T² Center

4

Post-Storm

5

- **Cleanup parking lots**



AASHTO Guide for Snow and Ice

Melt water – pile the snow at the downhill side to avoid a skating rink

But...don't create a drainage problem on the neighbor



Photo: Gregory Garrich

Winter Maintenance Training – Delaware T² Center

5

During the Storm

6

- **Controlling melt water**

- Superelevated curves
 - ✦ Plow to the low side
 - ✦ Plow beyond the shoulder break on the high side
- Keep drainage facilities cleared
 - ✦ Storm drains
 - ✦ Ditches
 - ✦ Outfalls
 - ✦ Shoulder pathways to ditches

- **Managing windrows**

- Good plowing techniques will take care of most of the time
- Intersections can leave windrows and piles more easily

AASHTO Guide for Snow and Ice

Winter Maintenance Training – Delaware T² Center

6

Post-Storm

7

- Clear curb ramps
- Deice sidewalks
- Watch for refreezing



AASHTO Guide for Snow and Ice

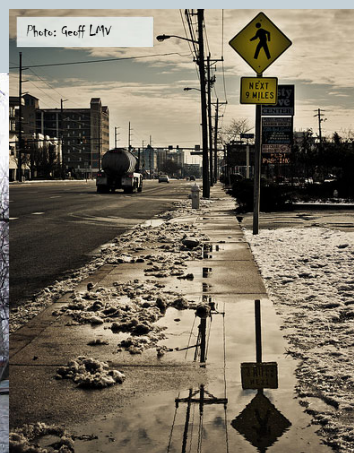
Winter Maintenance Training – Delaware T² Center

7

Post-Storm

8

- Melt water control



AASHTO Guide for Snow and Ice

Winter Maintenance Training – Delaware T² Center

8

Post-Storm

9

- Melt water control






AASHTO Guide for Snow and Ice
Winter Maintenance Training – Delaware T² Center

9

Post-Storm

10

- Melt water control

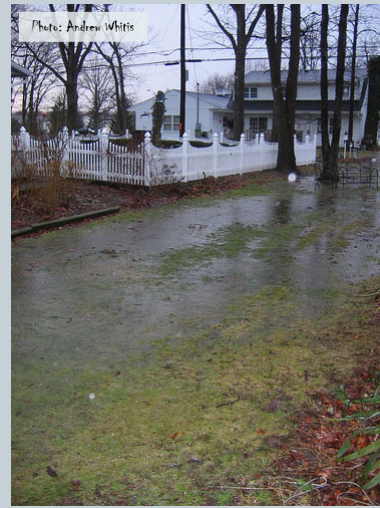
AASHTO Guide for Snow and Ice
Winter Maintenance Training – Delaware T² Center

10

Post-Storm

11

- Melt water control
- Reestablish drainage paths



AASHTO Guide for Snow and Ice

Winter Maintenance Training – Delaware T² Center

11

Post-Storm

12

- Bridges
 - Clear scuppers for drainage
 - Open sidewalks
 - Watch for refreezing



AASHTO Guide for Snow and Ice

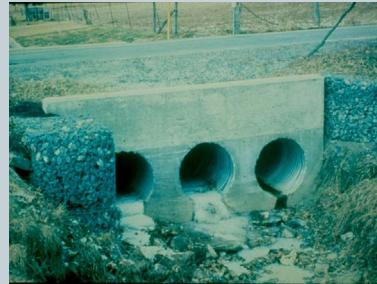
Winter Maintenance Training – Delaware T² Center

12

Post Season Activities

13

- Drainage facilities are essential in preventing water damage to our roads



Winter Planning & Organization – LTAP and Salt Institute

Winter Maintenance Training – Delaware T² Center

13

Post Season Activities

14

- Post-winter cleanup is essential to our roads, streets, bridges, drainage systems...essential to our total transportation infrastructure



Winter Planning & Organization – LTAP and Salt Institute

Winter Maintenance Training – Delaware T² Center

14

Need More?

15

Matt Carter
Municipal Engineering Circuit Rider
Delaware T² Center
matheu@udel.edu
(302) 831-7236

<http://www.ce.udel.edu/dct/T2.html>

The Technology Transfer (T²) or Local Technical Assistance Program is a partnership among state universities, state departments of transportation, and the Federal Highway Administration. There are 58 centers throughout the United States with primary missions to promote training, technology transfer, and research project implementation at state and local transportation agencies. This document and/or its attachments may contain analyses or other technical information. These are prepared as an Information Service of the Delaware T² Center and are provided "as is" without warranty of any kind, either expressed or implied. The Delaware T² Center, and its funding agencies (e.g., DelDOT, FHWA, University of Delaware) shall not be responsible for the use of this information. The products and technologies discussed herein (some of which are proprietary) are not endorsed by the author or the Delaware T² Center. Except where noted, all content herein, including photographs and tables, were developed and produced by the Delaware T² Center and may not be reprinted or otherwise used without written permission.

Winter Maintenance Training – Delaware T² Center

15