



1

SNOWPLOW CRASHES



- 23.8% - fixed object strikes
- 8.5% - backing crashes
- 11.4% - running off the road

2

SNOWPLOW CRASHES



- 19.2% - rear-ending the truck
- 11.3% - striking the wing plow
- There are things you can do!

3



4

VISUAL SCANNING FOR HAZARDS

- Constantly scan for hazards!
- Wide scanning pattern
- Look at least 15 seconds ahead
 - ¼ mile or 1 and ½ city blocks



5

VISUAL SCANNING FOR HAZARDS

- Objects may be hard to see when covered with snow
- Look for clues that an object may be hidden
- Continuously scan your surrounds
- Don't fixate on any one object or area



6

PREDICTING HIDDEN OBJECTS

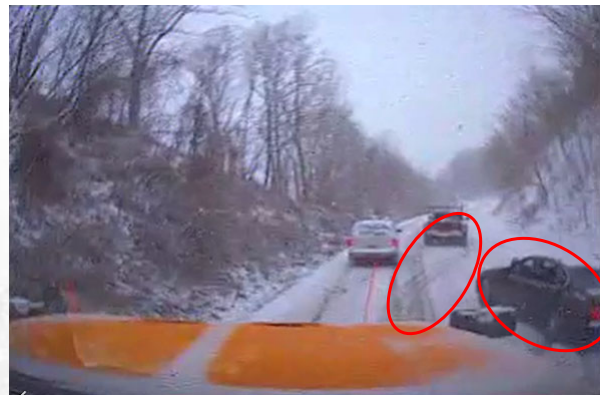
Get to know your route
before winter weather
arrives



7

ANTICIPATING OTHER VEHICLES' MISTAKES

- Questions to consider
 - Are they driving too fast?
 - Are they following too closely?
 - Are they swerving?
 - Are they accelerating too quickly?
 - Are they braking too hard?
- Watch for other vehicles' brake lights



8

SAFE/DEFENSIVE DRIVING

- Slow down
- Give more space
- Change lanes
- Be prepared
- Gradual braking and steering

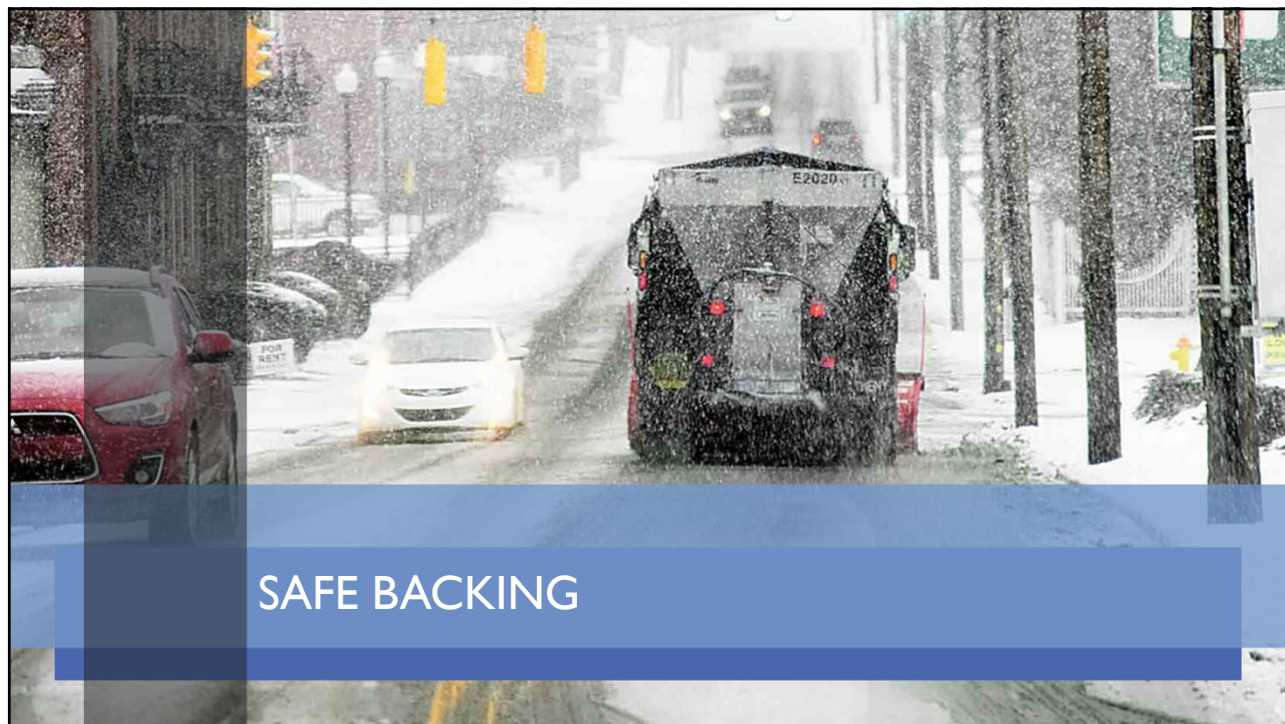


9

DANGER OF THE SNOW CLOUD



10



11

COMMON CAUSES OF BACKING CRASHES

- Fatigue
- Impatient
- Distraction
- Poor Visibility

HURRY!
HURRY!
HURRY!

12

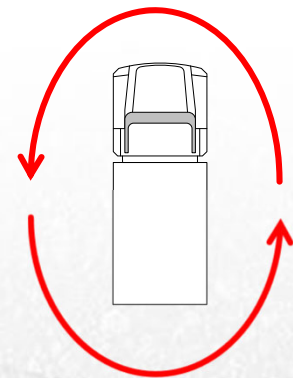
G.O.A.L. BEFORE BACKING



13

CIRCLE OF SAFETY

- Both sides
- Underneath
- Above
- Front
- Back



14

USING SPOTTERS

- A second set of eyes will help you avoid obstacles while backing
- If available, always have a partner get out and spot while backing
 - Especially in tight spaces
- If a spotter is not available, always get out and look
 - Identify markers that can help you avoid objects

15

OTHER BACKING SUGGESTIONS

- Warn others that you are about to back
- Turn on the four-way flashers
- Know your blind spots
- Turn the radio(s) down
- Stop all distractions
- Slow!
- Use all available mirrors



16



LIMITING DISTRACTIONS

17



WHAT IS DISTRACTED DRIVING?

18

DISTRACTED DRIVING EXAMPLE



19

DANGER OF DISTRACTED DRIVING

23x more likely to crash
when texting



20

EXTERNAL DISTRACTION

- 8% of heavy vehicle crashes due to external distraction.
- Examples
 - Unfamiliar with road
 - Searching for an address
 - Construction activity
 - Looking at a building or scenery
 - Looking at a sign



21



EXTERNAL
DISTRACTION

22

INTERNAL DISTRACTIONS

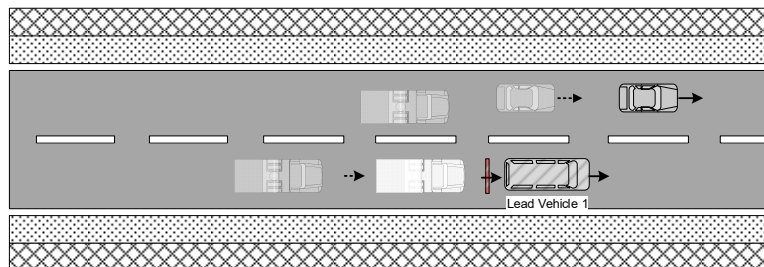
- 2% of heavy vehicle crashes occurred due to internal distraction.
- Usually initiated by the driver
 - Texting/App use
 - Dialing a phone
 - Looking at GPS screen
 - Retrieving objects
 - Reading



23

MORE TIPS FOR INTERNAL DISTRACTIONS

- Do not attempt to read or write while you drive
- Avoid eating and drinking while you drive
- Review maps and plan your route before getting behind the wheel
- Limit conversations with others to job related subjects, including radio conversations



24



25



26

HOW COMMON IS SNOWPLOW OPERATOR FATIGUE?

- ~80% feel fatigue sometimes while driving
- ~15% feel fatigue most of the time or always while driving

27

COMMON CAUSES OF DRIVER FATIGUE

Sleep-Related Causes of Fatigue

- Prior sleep quantity and quality
- Time of day
- Time since last sleep
- Health

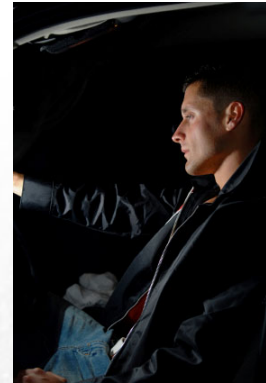
Task-Related Causes of Fatigue

- Monotonous driving conditions
- Complex tasks
- Time-on-task
- Equipment

28

SIGNS OF FATIGUE

- Attention to detail decreases
- Daydreaming
- Slow responses and reaction time
- Reduced motivation
- Poor memory
- Tunnel vision
- Microsleeps



29

COUNTERMEASURES OF FATIGUE



- Breaks every 2 hours
- Caffeine
- Music can help for brief periods of time
 - Can't be the only countermeasure used
- Improved cab insulation to reduce noise
- Properly adjusted seat
- Stay hydrated
- Eat healthy
- SLEEP!

30

