



SRIC WALK AROUND INSPECTION

FOR DAILY AND SRIC OPERATIONS

1

CONSISTS OF 2 SECTIONS

► OUTSIDE THE TRUCK

A walk around safety inspection of various components to check critical items for safety and to minimize component failure

► INSIDE THE CAB

Inspection of gauges and safety items such as horns, signals, etc. as well as brake safety devices and basic brake functions for safe operation

2

Why is a walk around inspection important?

- ▶ To minimize break downs
- ▶ Increase productivity
- ▶ Safety

3

THINGS THAT WILL BE COVERED

- ▶ Parking brakes
- ▶ Lighting devices and reflectors
- ▶ Tires
- ▶ Horn
- ▶ Gauges
- ▶ Windshield wipers
- ▶ Heater / Defroster
- ▶ Mirrors
- ▶ Wheels, Rims, and Lug-nuts
- ▶ Emergency equipment
- ▶ Fluid levels

4

THINGS THAT WILL BE COVERED

- ▶ Plow
- ▶ Plow Frames
- ▶ Hydraulics
- ▶ Hydraulic Hoses
- ▶ Cutting Edge
- ▶ Plow Fluid
- ▶ Plug-ins and Fittings
- ▶ Cylinders
- ▶ Plow Locking Pins
- ▶ Plow Chains
- ▶ Spreader straps
- ▶ Spinner
- ▶ Guards and Deflectors
- ▶ Strobes
- ▶ Hand-rails and ladders

5

Types of equipment may vary

- ▶ Be familiar with your truck
- ▶ Be familiar with SRIC Equipment installed on the truck
- ▶ Learn about unfamiliar Equipment in the Operators Manual
- ▶ Know the location and function of gauges, warning lights, and safety devices on your vehicle prior to operation

6

BEGIN YOUR OUTSIDE INSPECTION

- ▶ Just remember to make a complete rotation around your vehicle
- ▶ Develop a routine that suits you
- ▶ Go through your routine at the beginning of every shift

7

We are going to begin with the plow and its gear



8

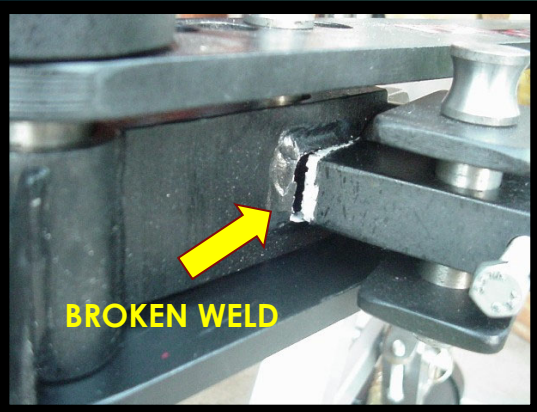
Check your plow guards, deflectors, and cutting edges



9

PLOW FRAME

- Be sure to check for broken welds
- Look for stress cracks in frame



10

Be sure to inspect the coupling surfaces on the plow frame and the truck frame prior to mounting



11

Inspect the hydraulic fittings and clean the dirt from them before coupling



12

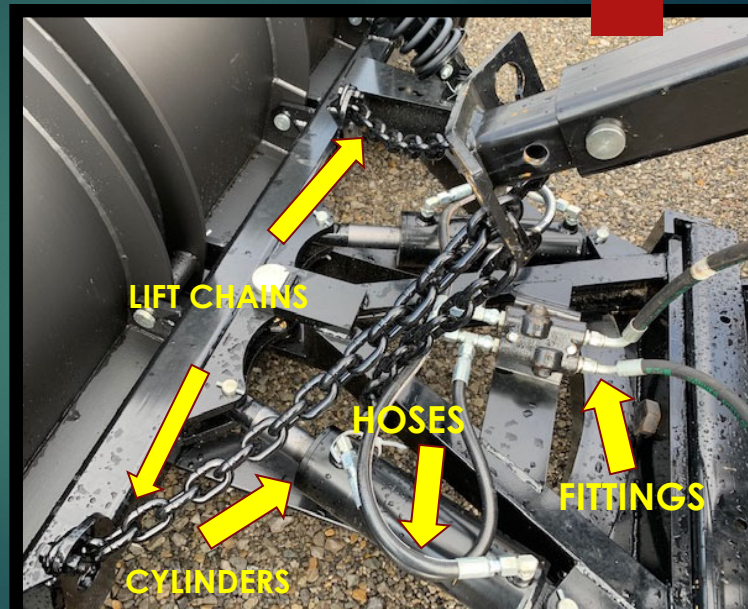


When coupled, make sure plow hitch is seated properly.
Also be sure that hitch pins are in place with cotter pins

13

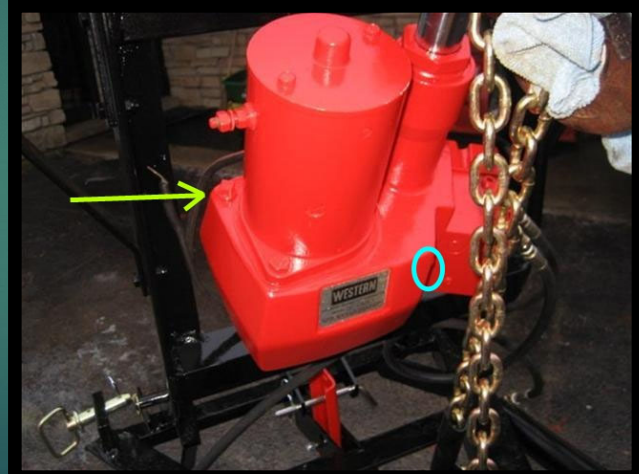
► Be sure to check Lift chains for proper adjustment and inspect for damage

► Check hydraulic cylinders, hoses and fittings for leaks



14

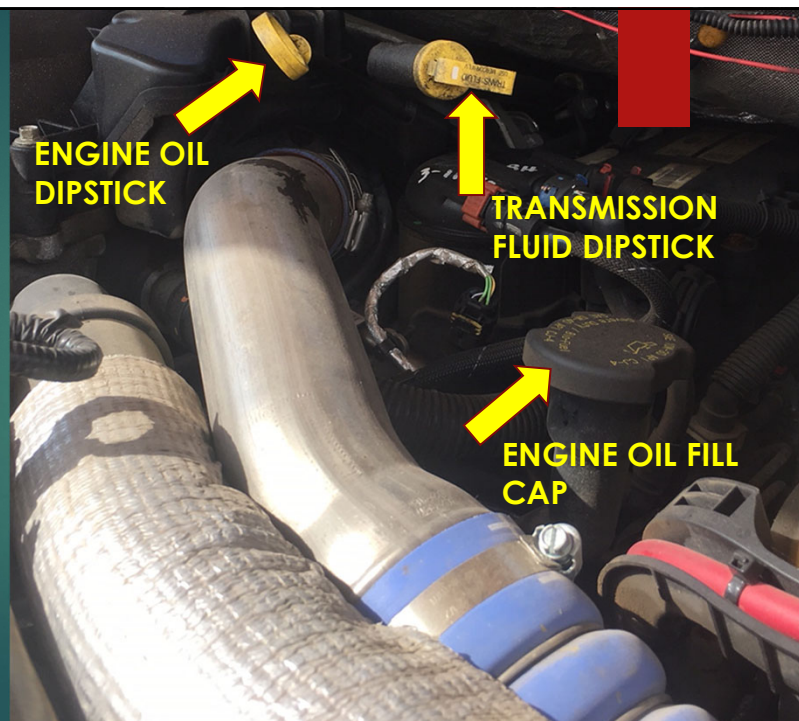
Be sure to check fluid levels. And remember that some plow units run from the truck hydraulic reservoir like the one on the left, some models have their own pump and reservoir like the one on the right



15

ENGINE COMPARTMENT CHECK

► Be sure to check your engine oil and transmission fluid levels. Also know where the oil fill cap is located



LM2

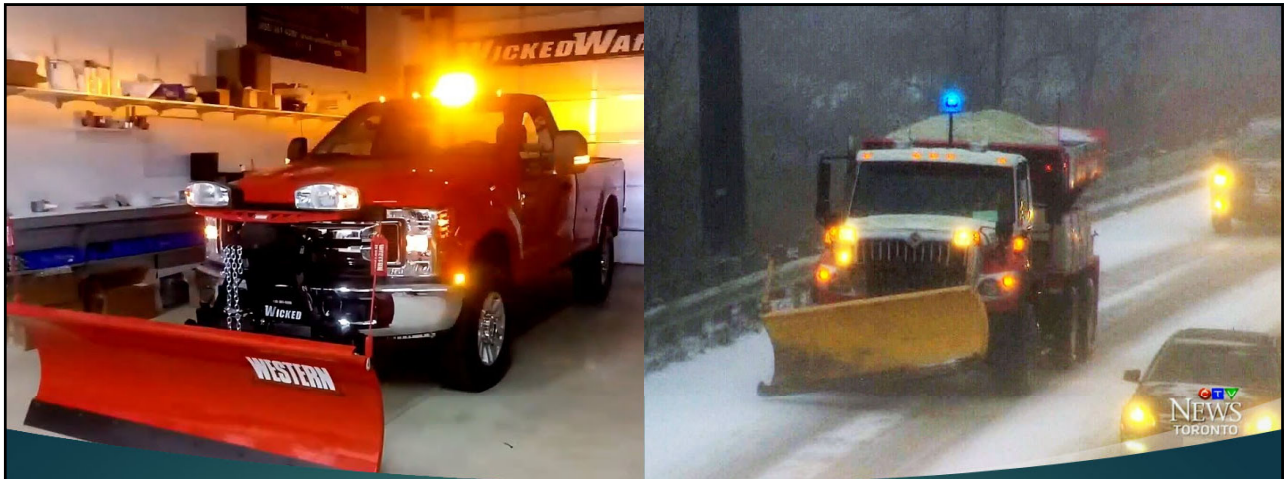
16

Check coolant level. If reservoir is low, then add as needed. If reservoir is empty, it may be necessary to add directly into radiator.



Radiator cap may only be removed if engine is cold

17



MAKE SURE THAT YOUR STROBE LIGHTS ARE OPERATIONAL

18



**MAKE SURE YOUR HEADLIGHTS ARE CLEAN
AND PROPERLY ADJUSTED**

19



**Check plow lights for adjustment and clean
as needed**

20

Make sure reflective materials are intact



21

Be sure to check steps and ladders to clear ice and snow before using



22

Larger trucks may have steps on the front to access grills, winter-fronts, and plow lights



23

Don't forget side rails, hand-rails and ladders



24

Check rear lights for function and keep them clean and visible



25

Using the spreader box



26

Make sure it is secure by strapping it down and use strong anchor points and straps with sufficient weight rating



27

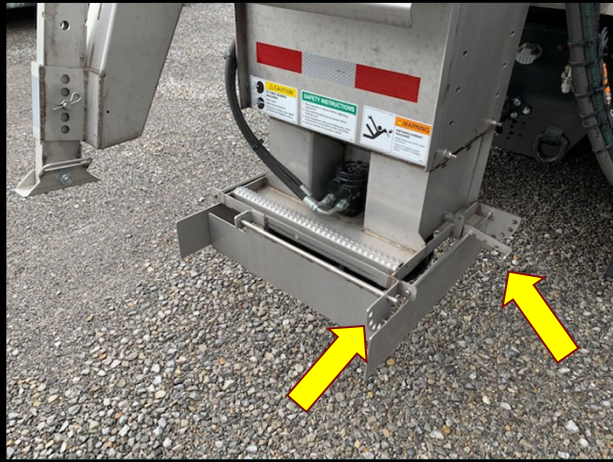
SPINNER

Check the spinner and be sure to grease it as necessary



28

Some spinners may have moveable flaps to adjust input volume and the broadcast area



29

Don't forget to check your Parking Brakes

HYDRAULIC BRAKES



AIR BRAKES



30

HYDRAULIC BRAKES

- ▶ Check the fluid level periodically
- ▶ Make sure the pedal isn't mushy or low



31

On Air Brakes
check for leaks



32

TIRE CHAINS

Be sure to install chains before any winter operations



33

Inspect condition of tires and periodically check chains for wear and make sure they stay tight



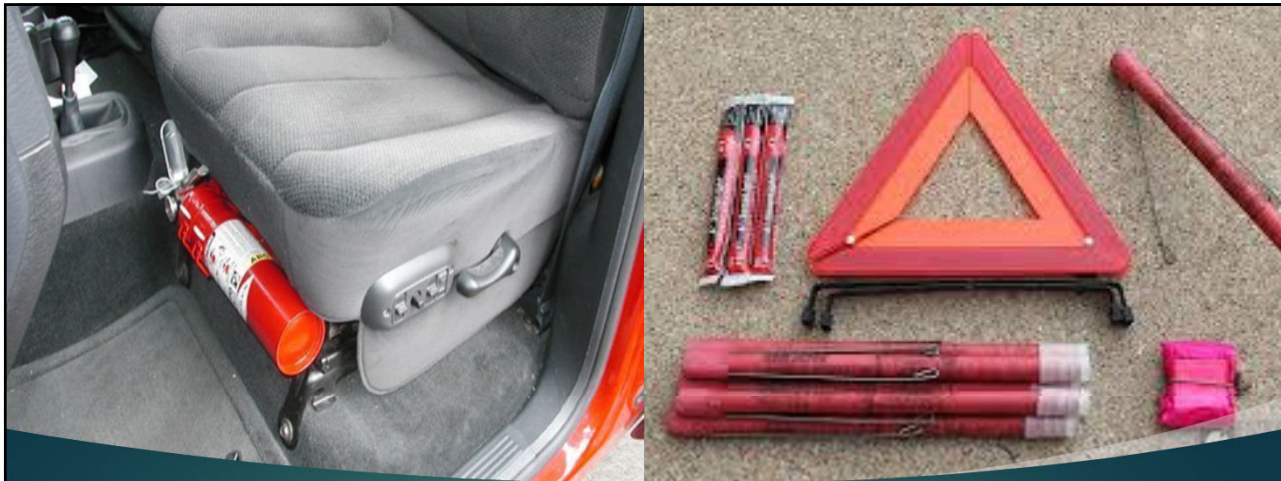
34

In cab inspection

It is necessary to do safety checks and inspect certain items for function prior to operation



35

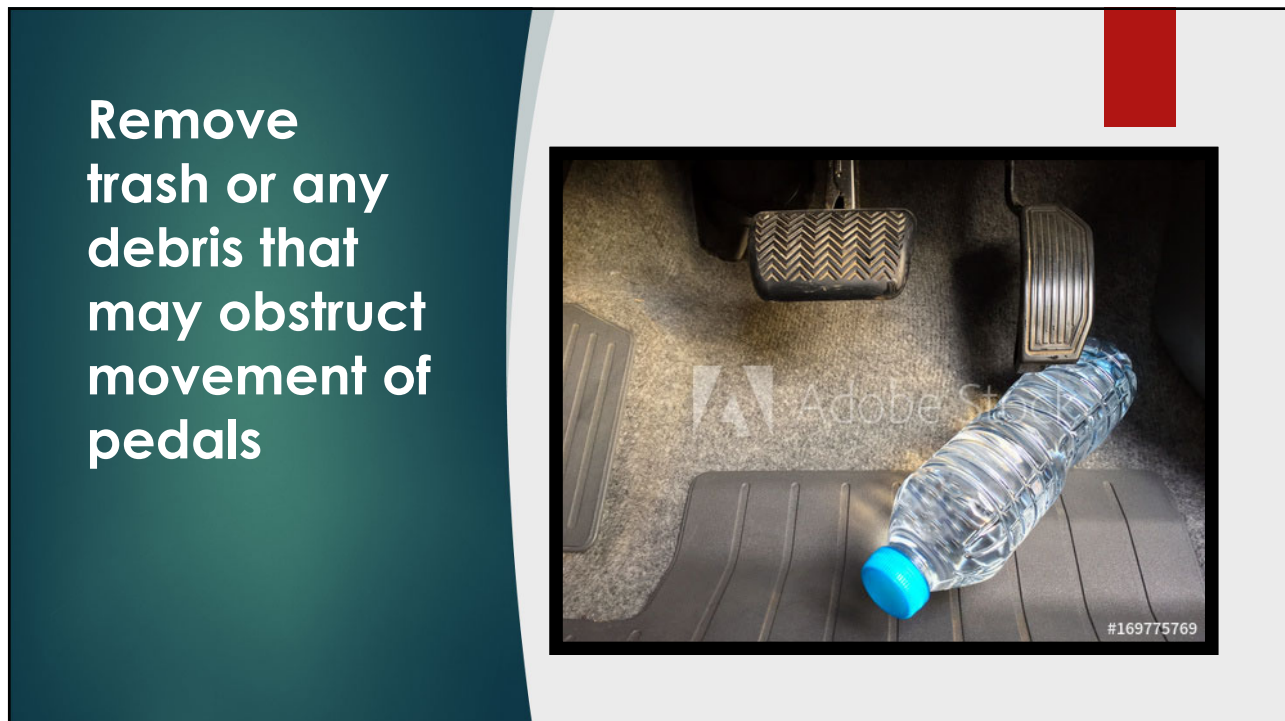


Make sure you have your safety gear

36



37



38

Check the
function of the
heater and
defroster controls



39



Make sure all gauges are
functioning properly

40



Plow and Spreader controls

- ▶ Ensure that power cables are connected and in good working order
- ▶ Check for proper function prior to operation

41



Some of your inspections may vary according to which shift you work

42

No matter what
type of
equipment you
have, be familiar
with its operation
and do regular
maintenance



43



Be safe
out there!

44



45



46

EQUIPMENT OPERATORS TRAINING ACADEMY

