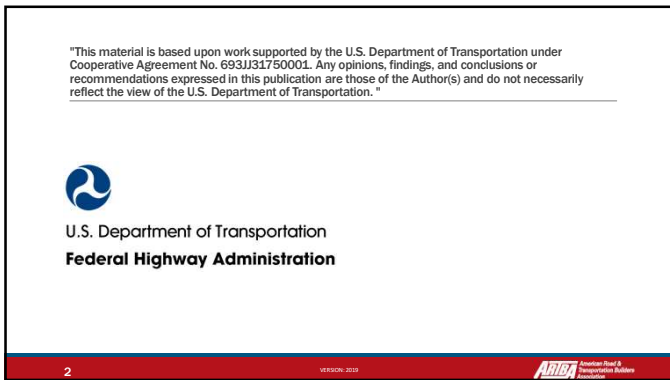
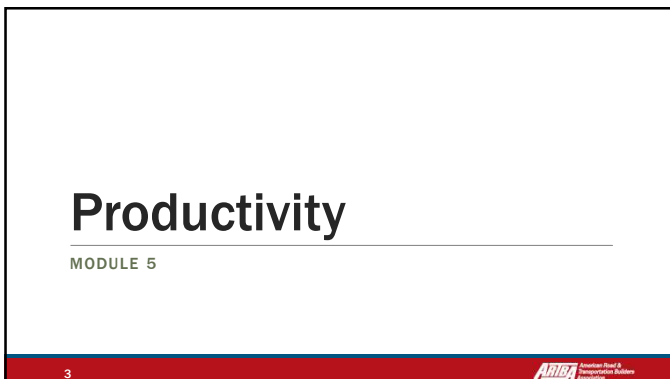




1




2



3

Learning Objectives

- Explain the additional benefits an ITCP provides to the work zone
- Explain how the ITCP improves communications in a roadway construction project



4


4

ITCPs Improve Productivity

The key concept behind Internal Traffic Control is **PLANNING** for worker safety.

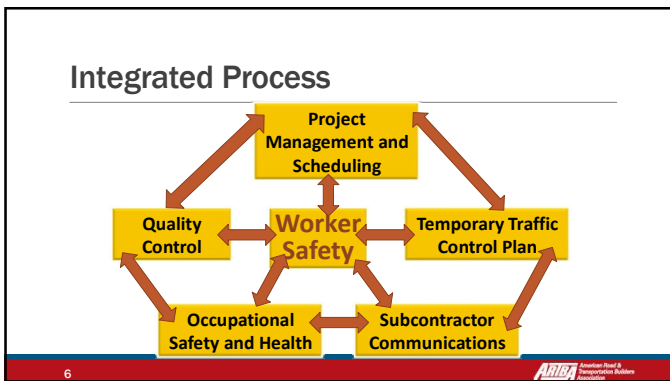
ITCPs integrate other aspects of planning to coordinate on-site activities so they run in a safe, smooth, efficient manner.

ITCPs improve safety and productivity if they are well conceived.



5

5



6

Productivity and Efficiency

Better internal traffic routing and strict control over backing reduces time-consuming incidents.



7



7

Productivity and Efficiency

Well executed ITCPs will control for- and alert workers to overhead and buried hazards such as power lines, cranes & other utilities.



8



8

Productivity and Efficiency

Can improve efficiency through reduced repositioning.



9



9

Productivity and Efficiency

One of the greatest contributions of ITCPs is improved communications



10



10

Communications

Management Elements Addressed

- Chain of command
- On-site equipment and personnel
- Contact information, including on-site contractors,
- Contracting agency
- Emergency response services
- The location, time table, and scope of the project
- Assignment of responsibilities

11



11

Communications

Management Elements Addressed

ITCP operations communication plan should include the following:

- Communications regarding changes to the ITCP
- A means for workers on foot to talk with operators, truck drivers and others coordinating access and egress of vehicles, and the movement of heavy equipment within the work space
- A means for equipment operators to communicate with each other and with key site personnel
- A plan for orienting independent truck drivers and subcontractors to the work space and the ITCP

12



12

Discussion and Questions

END MODULE FIVE

13